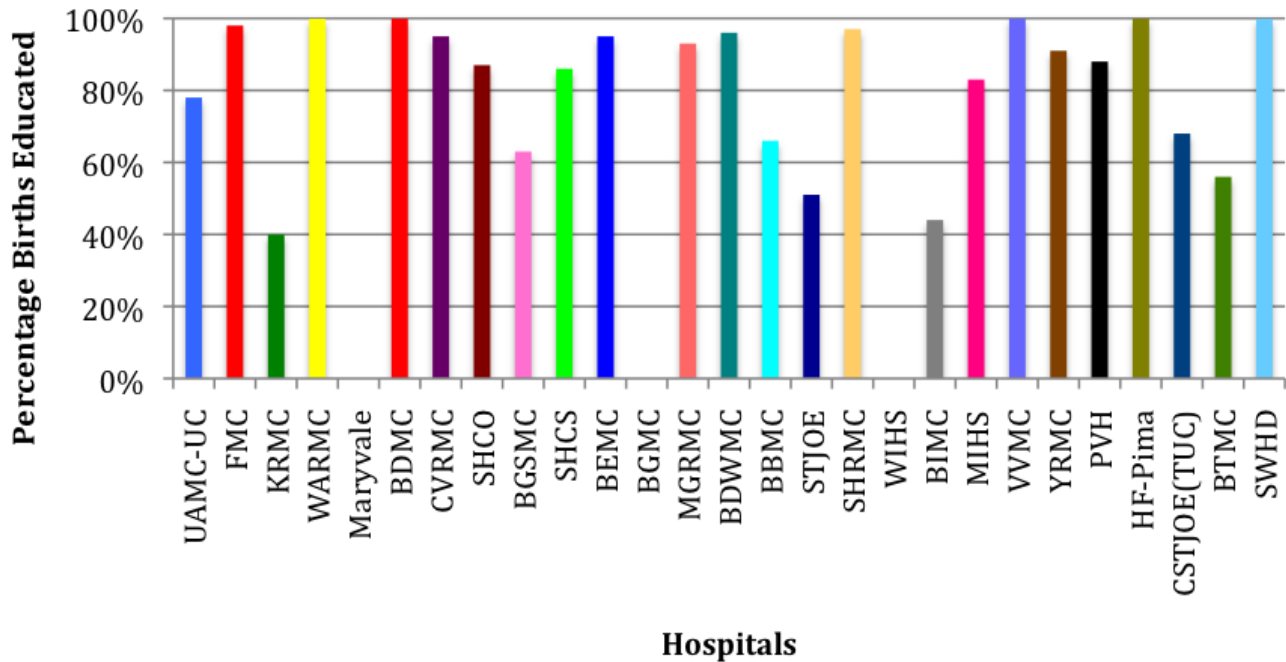
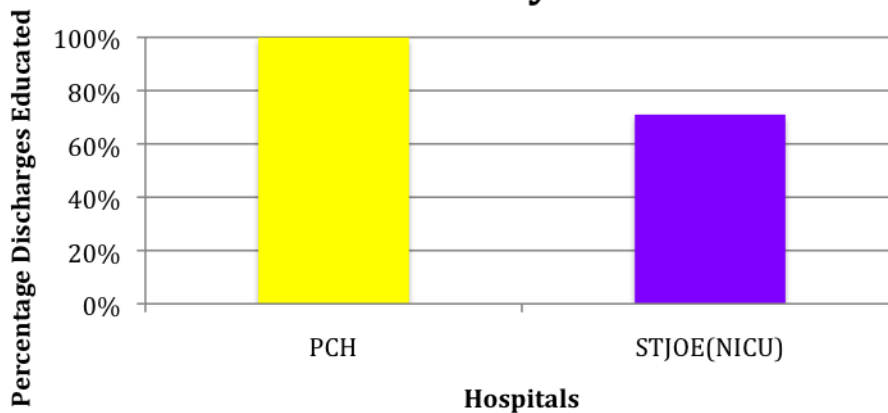


**Never Shake a Baby Arizona  
February 2015 Report**

## NSBAz Hospital Education Rates February 2015



## NSBAz Hospital NICU Education Rates February 2015



## Raw Data for February 2015

	Month/Year	# births	# parents signed Form	# parents refused	% births educated	% parents offered education
BBMC	February-15	74	49		66.22%	66.22%
BDWMC	February-15	132	127		96.21%	96.21%
BEMC	February-15	356	339		95.22%	95.22%
BGSMC	February-15	438	275		62.79%	62.79%
BIMC	February-15	73	32		43.84%	43.84%
BTMC	February-15	379	210		55.41%	55.41%
CSTJOE(TUC)	February-15	203	139		68.47%	68.47%
CVRMC	February-15	22	21		95.45%	95.45%
FMC	February-15	97	95		97.94%	97.94%
KRMC	February-15	47	19		40.43%	40.43%
MIHS	February-15	193	160		82.90%	82.90%
MGRMC	February-15	56	52		92.86%	92.86%
PVH	February-15	67	59	1	88.06%	89.55%
SHCO	February-15	98	85		86.73%	86.73%
SHCS	February-15	377	324	3	85.94%	86.74%
STJOE	February-15	354	181		51.13%	51.13%
STJOE(NICU)	February-15	41	29		70.73%	70.73%
SHRMC	February-15	59	57		96.61%	96.61%
BUMC-Tucson	February-15	113	88		77.88%	77.88%
VVMC	February-15	49	49		100.00%	100.00%
WARMC	February-15	6	6		100.00%	100.00%
YRMC	February-15	101	92	1	91.09%	92.08%
SWHD	February-15	28	28		100.00%	100.00%
PCH	February-15	21	21		100.00%	100.00%
BDMC	February-15	400	400		100.00%	100.00%
HF-Pima	February-15	8	8		100.00%	
extra			16			
Totals		3792	2961	5	78.09%	78.22%

## Guide to Site Abbreviations

<b>BBMC</b>	<b>Banner Baywood Medical Center</b>
<b>BDMC</b>	<b>Banner Desert Medical Center</b>
<b>BEMC</b>	<b>Banner Estrella Medical Center</b>
<b>BGMC</b>	<b>Banner Gateway Medical Center</b>
<b>BGSMC</b>	<b>Banner Good Samaritan Medical Center</b>
<b>BDWMC</b>	<b>Banner Del Webb Medical Center</b>
<b>BIMC</b>	<b>Banner Ironwood Medical Center</b>
<b>BTMC</b>	<b>Banner Thunderbird Medical Center</b>
<b>CSTJOE(TUC)</b>	<b>Carondelet St. Joseph's Hospital (Tucson)</b>
<b>CVRMC</b>	<b>Cobre Valley Regional Medical Center</b>
<b>CCFR</b>	<b>Cochise Child and Family Resources Home Visiting</b>
<b>FMC</b>	<b>Flagstaff Medical Center</b>
<b>HF-Pima</b>	<b>Healthy Families (Pima County) at Child and Family Resources</b>
<b>HF-Pinal</b>	<b>Healthy Families (Pinal County) at Child and Family Resources</b>
<b>KRMC</b>	<b>Kingman Regional Medical Center</b>
<b>MIHS</b>	<b>Maricopa Integrated Health System</b>
<b>Maryvale</b>	<b>Maryvale Hospital</b>
<b>MGRMC</b>	<b>Mt Graham Regional Medical Center</b>
<b>MVMC</b>	<b>Mountain Vista Medical Center</b>
<b>PVH</b>	<b>Paradise Valley Hospital</b>
<b>PCH</b>	<b>Phoenix Children's Hospital</b>
<b>SHCO</b>	<b>Scottsdale Healthcare Osborn</b>
<b>SHCS</b>	<b>Scottsdale Healthcare Shea</b>
<b>STJOE(NICU)</b>	<b>St. Joseph's Hospital (NICU)</b>
<b>STJOE</b>	<b>St. Joseph's Hospital (Couplet care)</b>
<b>SHRMC</b>	<b>Summit Healthcare Regional Medical Center</b>
<b>SWHD</b>	<b>Southwest Human Development</b>
<b>TMC</b>	<b>Tucson Medical Center</b>
<b>UAMC-UC</b>	<b>University of Arizona Medical Center- University Campus</b>
<b>VVMC</b>	<b>Verde Valley Medical Center</b>
<b>WVH</b>	<b>West Valley Hospital</b>
<b>WARMC</b>	<b>Western Arizona Regional Medical Center</b>
<b>WIHS</b>	<b>White River Indian Health Service</b>
<b>YRMC</b>	<b>Yavapai Regional Medical Center</b>

