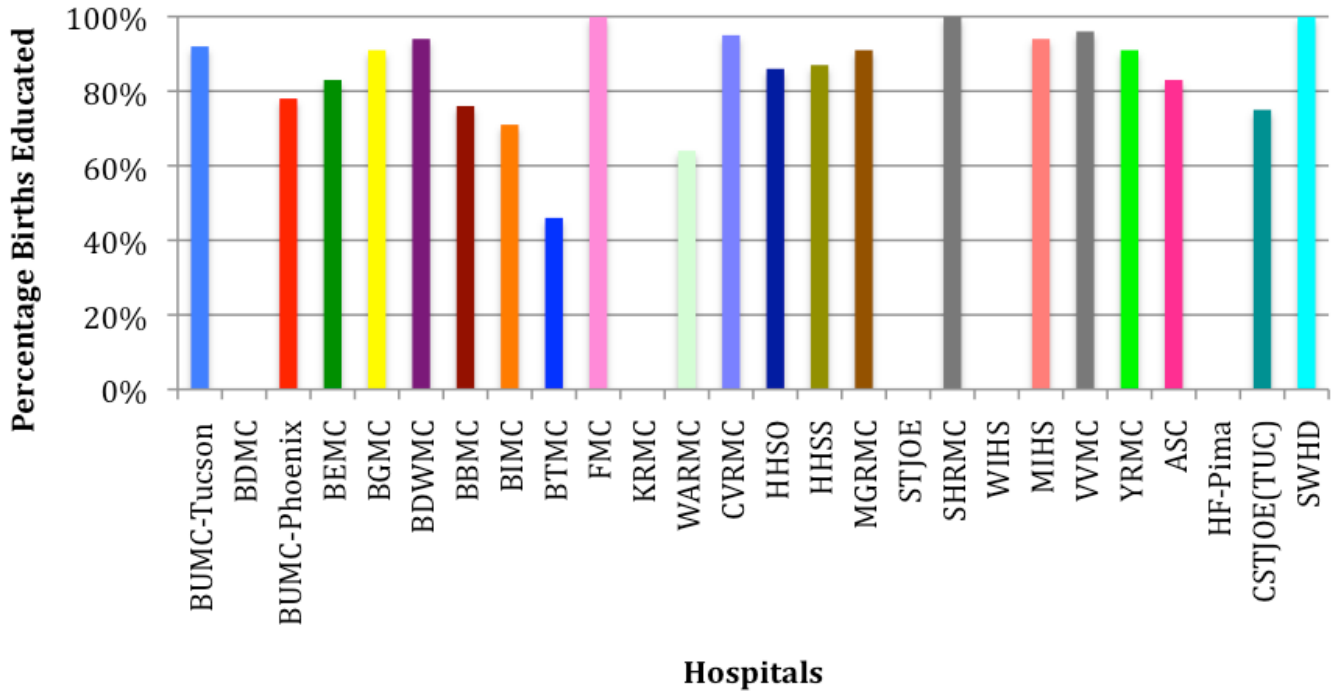
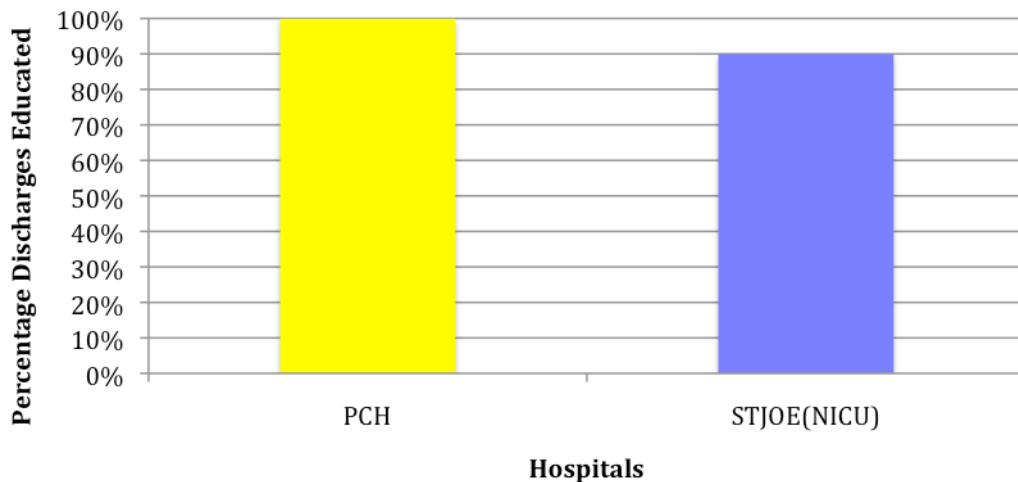


**Never Shake a Baby Arizona
May 2016 Report**

NSBAz Hospital Education Rates May 2016



NSBAz Hospital NICU Education Rates May 2016



Raw Data for May 2016

	Month/Year	# births	# parents signed Form	# parents refused	% births educated	% parents offered education
BBMC	May-16	51	39		76.47%	76.47%
BEMC	May-16	355	295		83.10%	83.10%
BIMC	May-16	58	41		70.69%	70.69%
CSTJOE(TUC)	May-16	195	147		75.38%	75.38%
CVRMC	May-16	20	19	1	95.00%	100.00%
FMC	May-16	87	87		100.00%	100.00%
MIHS	May-16	186	174		93.55%	93.55%
MGRMC	May-16	47	43		91.49%	91.49%
ASC	May-16	80	66	1	82.50%	83.75%
HHSO	May-16	81	70		86.42%	86.42%
HHSS	May-16	374	324	4	86.63%	87.70%
STJOE(NICU)	May-16	63	57		90.48%	90.48%
VVMC	May-16	45	43		95.56%	95.56%
WARMC	May-16	14	9	5	64.29%	100.00%
YRMC	May-16	89	81		91.01%	91.01%
SWHD	May-16	23	23		100.00%	100.00%
BUMC-Tucson	May-16	142	130		91.55%	91.55%
PCH	May-16	21	21		100.00%	100.00%
BDWMC	May-16	124	117		94.35%	94.35%
BGMC(Gateway)	May-16	304	277		91.12%	91.12%
BTMC	May-16	465	212		45.59%	45.59%
BUMC-Phoenix	May-16	485	380		78.35%	78.35%
SHRMC	May-16	80	80		100.00%	100.00%
Totals		3389	2735	11	80.70%	81.03%

Guide to Site Abbreviations

BBMC	Banner Baywood Medical Center
BDMC	Banner Desert Medical Center
BEMC	Banner Estrella Medical Center
BGMC	Banner Gateway Medical Center
BUMC-Phoenix	Banner University Medical Center-Phoenix Campus formerly known as Banner Good Samaritan
BDWMC	Banner Del Webb Medical Center
BIMC	Banner Ironwood Medical Center
BTMC	Banner Thunderbird Medical Center
CSTJOE(TUC)	Carondelet St. Joseph's Hospital (Tucson)
CVRMC	Cobre Valley Regional Medical Center
FMC	Flagstaff Medical Center
HF-Pima	Healthy Families (Pima County) at Child and Family Resources
HF-Pinal	Healthy Families (Pinal County) at Child and Family Resources
KRMC	Kingman Regional Medical Center
MIHS	Maricopa Integrated Health System
MGRMC	Mt Graham Regional Medical Center
ASC	Abrazo Scottsdale Campus, formerly known as Paradise Valley Hospital
PCH	Phoenix Children's Hospital
HHSO	Honor Health Scottsdale Osborn formerly known as Socottsdale Healthcare
HHSS	Honor Health Scottsdale Shea formerly known as Socottsdale Healthcare
STJOE(NICU)	St. Joseph's Hospital (NICU)

STJOE	St. Joseph's Hospital (Couplet care)
SHRMC	Summit Healthcare Regional Medical Center
SWHD	Southwest Human Development
BUMC-Tucson	Banner University Medical Center-Tucson Campus
VVMC	Verde Valley Medical Center
WARMC	Western Arizona Regional Medical Center
WIHS	White River Indian Health Service
YRMC	Yavapai Regional Medical Center